

# QubeMDx<sup>+</sup>

## Canine Blood Infection Assay (CHW / Ecanis / Aphag&Aplat)

Canine vector-borne diseases (CVBDs) such as Canine Heartworm (*Dirofilaria immitis*), *Ehrlichia canis*, *Anaplasma phagocytophilum*, and *Anaplasma platys* often present with overlapping symptoms, making diagnosis challenging. Traditional antibody-based tests detect the host's immune response, which may delay detection—especially in early-stage infections or immunocompromised dogs.

The QubeMDx<sup>+</sup> Canine Blood Infection Assay is a rapid, high-accuracy molecular test that directly detects these pathogens from whole blood. It delivers faster, more reliable results than serology or microscopy, enabling veterinarians to make timely, informed treatment decisions.

### Key Features:



#### Multiplexing Assay

Detects 4 pathogens in a single test.



#### Veterinary-Friendly Workflow

Ease of use and time saving design with minimal training required.



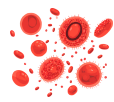
#### Rapid Result

Delivers lab-quality results within 20 minutes for immediate clinical action.

### Diagnostic Procedure in 5 Steps:



Sampling



RBC Lysis



Extraction



Transfer



20 min

Start Run



### Result Interpretation:

Sample ID:	Test Result
CHW	POSITIVE
Ecanis	NEGATIVE
Aphag&Aplat	NEGATIVE

Print
 New Test
 Fluor Curve

### Assay Information:

Cat. No.	PCRCQ3113
Quantity	10 tests/box
Targets	<i>Dirofilaria immitis</i> <i>Ehrlichia canis</i> <i>Anaplasma phagocytophilum</i> <i>Anaplasma platys</i>
Sample Types	Whole Blood (EDTA)
Kit Storage	5-25 °C
Turnaround Time	20 min

**Credo Diagnostics Biomedical Pte. Ltd.**

491B River Valley Road #06-01 Valley Point Singapore 248373

✉ service@credodxbiomed.com

🌐 credodxbiomed.com

🌐 linkedin.com/company/credo-diagnostics

Version: v1.0 June 2025

**Advanced Medical Technology for All**